

Pathloss 5 Installation

HARDWARE REQUIREMENTS

The Pathloss program will operate on Microsoft Windows XP and later (Vista and Windows 7) operating systems. Overall performance will depend on the computer speed and available memory. The minimum requirements for the operating system must be available. The recommended hardware requirements for Pathloss 5 are:

- 1 GHz 32-bit (x86) processor or 1-GHz 64-bit (x64) processor
- 1 GB of system memory
- Windows Aero-capable graphics card. This includes a DirectX 9-class graphics card that supports a WDDM driver, Pixel Shader 2.0 in hardware and 32 bits per pixel
- 128 MB of graphics memory (minimum)
- 100-GB hard disk that has 5 GB of free hard disk space. Larger drives may be advisable as terrain data, clutter, and imagery can use large amounts of disk space.
- Internal or external DVD drive
- Internet access

A 32 bit color depth is required for transparent backgrounds.

INSTALLATION

The user will receive an EMail which contains the program serial number and the links to download and maintain the program. This serial number is your license. This serial number can be a single user license with one program option or a multi user license with different program options. The serial number is required to download and activate the program. You will need this serial number to report any installation problems. The Pathloss setup program is approximately 120 Mbs. There is only one version of the program which covers:

- single and multi user licenses
- all program options
- Pathloss license server and local license server activation

Use the links listed in the Email deliverable to download the setup program. This is an Install Shield application

The default installation directory is C:\PL50. Several complications arise if the default directory is changed to C:\Program Files\PL50 on Windows Vista and Windows 7.

- The program can only be used by current user.
- The install directory contains files which will be created and modified during normal program operation. The original files will not be modified; instead, a copy of these files will be created in the users virtual store. By default, files in the virtual store are hidden. This arrangement becomes very awkward in transferring files and program updates.

Start the setup program. Follow the on screen prompts to install the program. When the installation is complete, click on the PL50 application icon to start the program. If the program does not start, see the *Known Issues* topic under Pathloss 5 at <http://www.pathloss.com/pwiki>.

The Pathloss license server controls the activation and deactivation of the program. If the Pathloss program is allowed to access this server directly, activation and deactivation can be automatically carried out Online. This method must be used for shared operation



If the program cannot access the license server due to fire walls or other security restrictions, a key code - authorization code transaction sequence is carried out by Email or a web browser to activate the program. Similarly, to deactivate the program, the user must Email a deactivation code or send the deactivation code via a web browser.

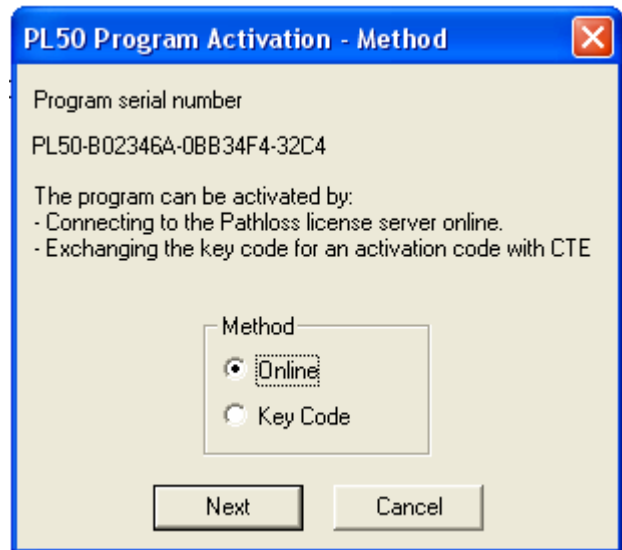
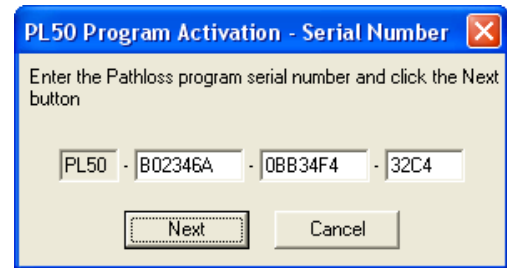
PROGRAM ACTIVATION

When the PL50 program first starts, there are only two menu items available - *Activate program* and *Help* (this file).

Select the *Activate program* menu item and enter the serial number. Note that the serial number may contain the number 0 but not the letter O. The letters are not case sensitive.

Click the *Next* button. If the serial number has been correctly entered, the activation procedure advances to the *PL50 program activation - method*.

The program checks for a connection to the Pathloss license server. If available, the *On Line* option will be active. If this is not active, then go to the paragraph *Key Code Activation Method*.



On-line Activation

The user is presented with a program locking option.

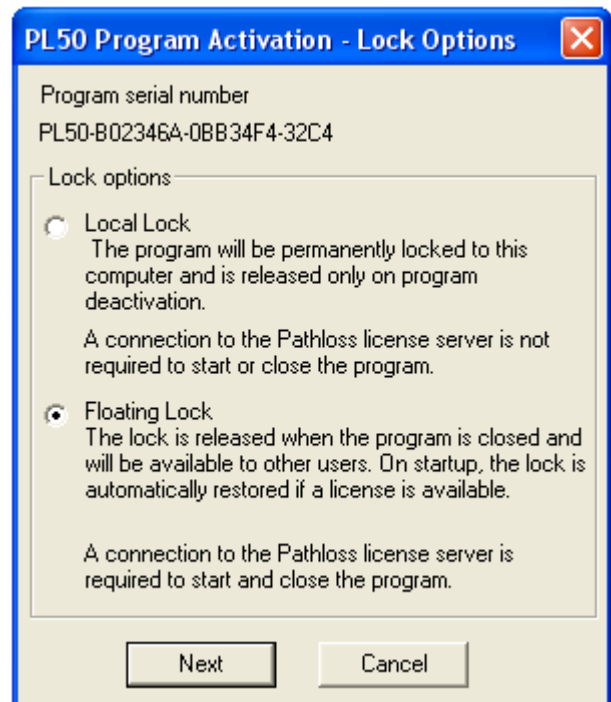
Local lock

In the *Local lock* option, the program is permanently locked to the computer. There is no further requirement for a connection to the Pathloss license server until the user decides to deactivate the program.

Floating lock

The floating lock option allows the program to be shared sequentially between several users. When a user exits the program, it will be available to another user. This option is available for both single user and multi user licenses.

The program must be allowed to access the Pathloss license server in the floating lock option. If a user closes the program and a connection to the Pathloss license server is not available, the program will remain locked on that computer.



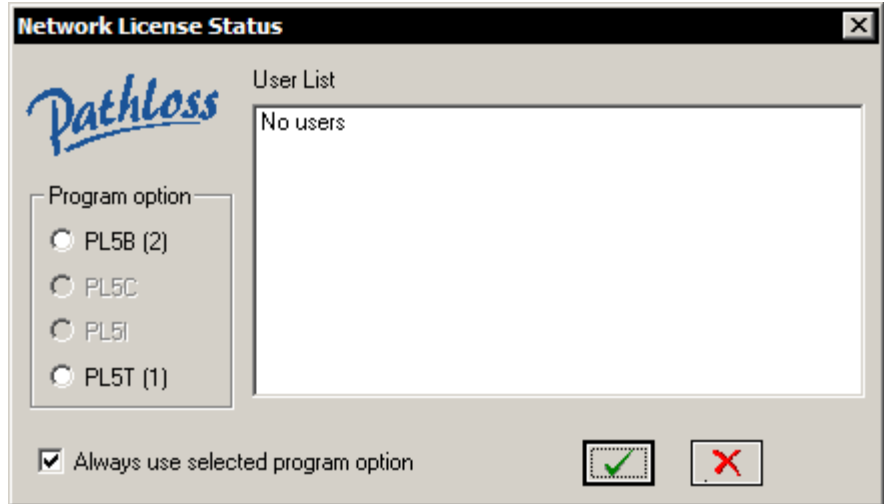
Multi user license

In the case of a multi user license with different program options, the user will be prompted to select the desired program option.

This option will always appear on program activation.

Under normal program start-up operation, this option will not appear if the *Always use selected program option* is checked and this option is available.

Note that if there are no program options available, the activation will fail.



Key Code Activation Method

In the event that an On-line connection is not available, the user must contact CTE to obtain an activation code. This can be done by Email or with a web browser. Only a local lock is available with the key code method.

Email key code - activation code

Click the *Copy Serial Number and Key Code* button. This will copy the serial number and key code to the windows clipboard. Then go to your Email program and paste (Ctrl V) this information into the body of the EMail.

Please do not send a screen print of the display as it cannot be processed.

Send the Email to cte@pathloss.com with the title "Program activation".

You will receive the Activation code for your program by return EMail. Copy this into the Activation code line and then click the *OK* button.



Web Activation

- Select the *Serial number* and copy this to the Windows clipboard (Ctrl + C).
- Click the *Web Activation* button.
- Paste the serial number into web form (Ctrl + V).
- Select the *Key Code* and copy this to the Windows clipboard (Ctrl + C).
- Paste the Key code into the web form (Ctrl + V).
- Enter your User name. This is required to resolve conflicts between several users who are attempting to activate the program.
- Click the *Retrieve activation code* button.
- If the operation is successful the activation code will be returned. At this point the Pathloss license server has recorded the activation. Select the Activation Code and copy this to the Windows clipboard. The paste this into the *Program Activation - Key Code* dialog and click the OK button

Use this form to retrieve your Pathloss 5 activation code.

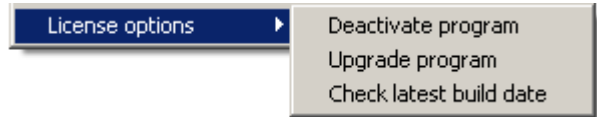
Pathloss 5 serial number:	PL50-B02346A-0BB34F4-32C4
Key code:	3BYEFG-Q8S9RT-63P8Z
User name:	Link designer

Retrieve activation code

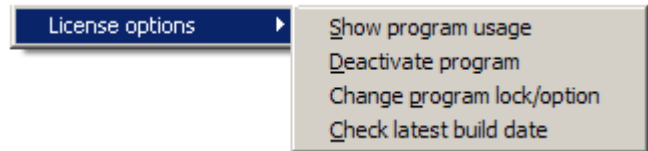
**Your Activation Code is
YSGCR-55342-8834**

Program menu

The *License options* menu for the local lock method is shown on the right.



The *License options* menu for the floating lock method is shown on the right. On a multi user license, the *Show program usage* menu item show all users currently using the program.

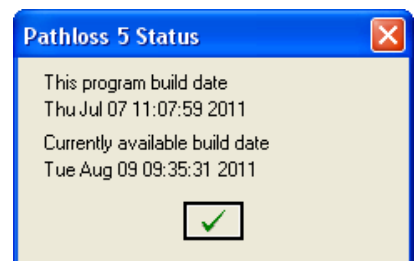
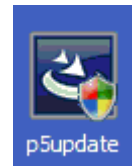


PROGRAM MAINTENANCE AND UPDATES

Modifications and additions to the program are carried out on a continuing basis. Each new release is identified by its build date. If a connection to the Pathloss license server is available, then select the *Configure - License options - Check latest build date* menu item.

The complete program revision history is available at:

http://www.pathloss.com/pwiki/index.php?title=Pathloss_5_revision_history



The program build date is shown in the *Help - About* menu item.

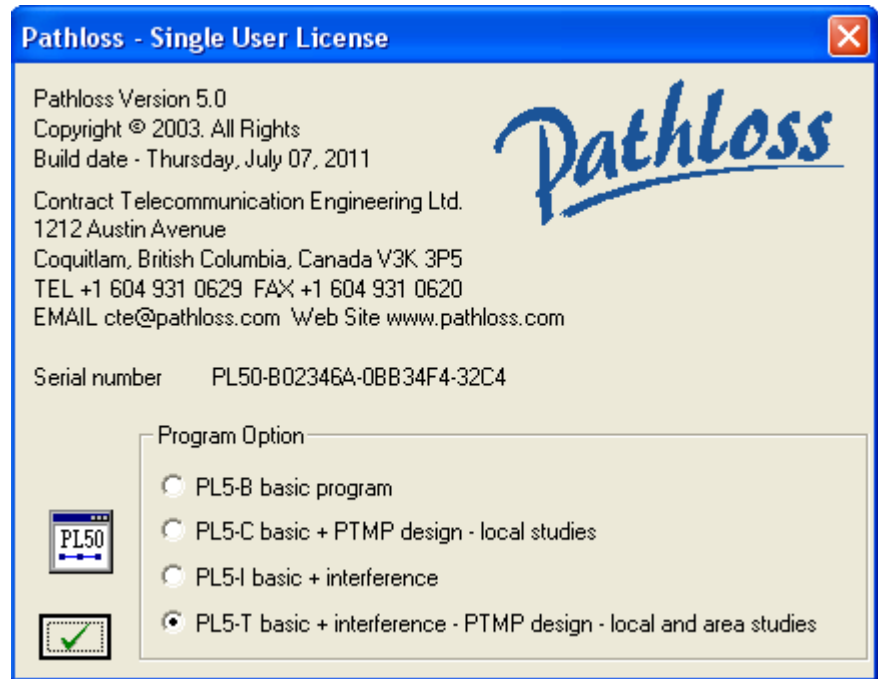
In some cases, a major update may involve a complete reinstallation of the program. This would consist of:

- Deactivate the existing program.
- Remove the program with the Windows *Add Remove Programs* utility.
- Download and install the new program.
- Activate the new program.

In most case, the update consists of downloading and running the update file,

The update link:

<http://www.pathloss.com/p5/update/download.php>



provides details on the type of update which will depend on the current program build date. The download links are also given in this link.

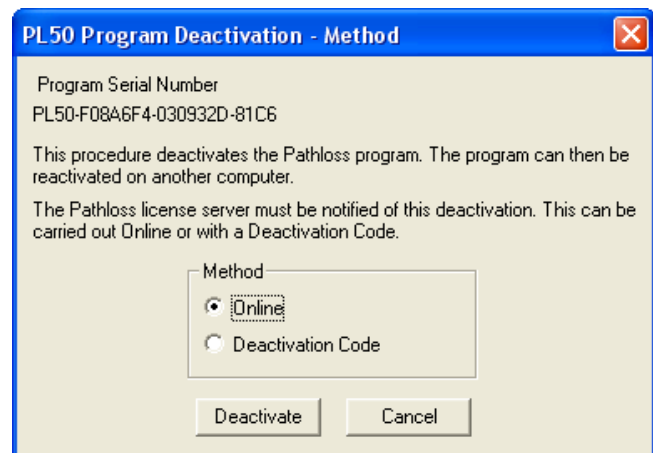
PROGRAM DEACTIVATION

In the activation procedure described above, the Pathloss license server database has a record of this installation. Any subsequent attempts to activate the program using the same serial number will fail unless this is a multiuser license and the requested program option is available.

If a floating lock is being used to share a single user license program between several users, it is not possible to activate the program if another user is operating the program. The activation can only be carried out when the program is available.

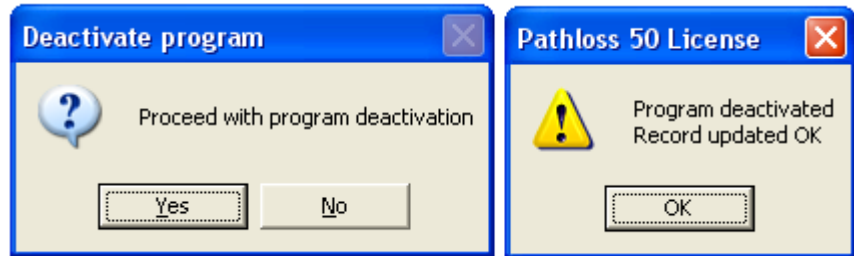
The deactivation procedure is the reverse of the activation procedure. A deactivation code is used to reset the installation record in the Pathloss license server. This can be carried out completely Online or by sending the deactivation code to CTE by either an Email or by using a Web browser interface

Select the *Configure - License options - Deactivate* menu item. The program first determines if the Pathloss license server can be contacted. Local firewalls or other security measures may prevent this. If the server can be contacted, then the *Online* option will be available otherwise select the *Deactivation code* option. Click the deactivate button



Click the deactivate button

A prompt will be issued to *Proceed with the program deactivation*. Click *Yes* to deactivate the program. If the *Online* option was used, an acknowledgement message is issued and the program terminates.



With the *Deactivation code* option, the user must carry out several steps to update the Pathloss license server database. This can be done by either Email or a Web browser interface.

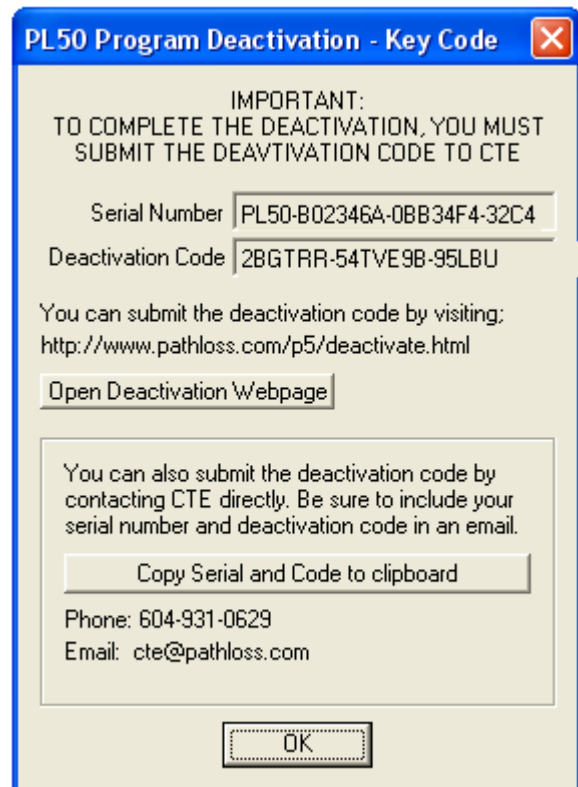
Email deactivation code

- Click the *Copy Serial and Code to clipboard* button.
- Open your Email program and paste (Ctrl + V) the serial number and code into an Email
- Address the Email to cte@pathloss.com with the title "Program deactivation".

Webpage Deactivation

In this method, the serial number and deactivation code will be sent to the Pathloss license server using your web browser.

- Select the *Serial number* and copy this to the clipboard (Ctrl +C)
- Click the *Open Deactivation Webpage* button
- Paste the serial number into web form (Ctrl + V)
- Select the *Deactivation Code* and copy this to the clipboard (Ctrl + C)
- Paste the deactivation code into the web form
- Click the *Submit deactivation code* button



Use this form to submit the deactivation code for your Pathloss 5 license.

Pathloss 5 serial number:	<input type="text" value="PL50-B02346A-0BB34F4-32C4"/>
Deactivation code:	<input type="text" value="2BGTRR-54TVE9B-95LBU"/>
<input type="button" value="Submit deactivation code"/>	

Success!
Your deactivation request has been completed